



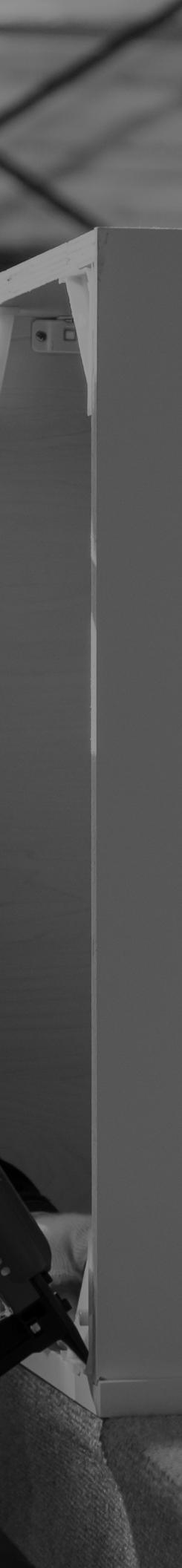
# Collection Catalog

January  
**2024**

America's Best Value in Cabinetry®



**America's Best  
Value in Cabinetry®**



# **CNC Cabinetry was founded on the idea of making kitchen cabinets more accessible to all, by offering the ultimate value in design, quality and price.**

---

For over 30 years, we've been providing kitchen and bath dealers, and the customers they serve, with the ultimate value in kitchen cabinets, countertops, and bathroom vanities.

Rather than tossing about meaningless boardroom phrases, we defined exactly what, "value" means.

Providing value means being able to offer a vast, ever-expanding selection of progressively-designed door styles. Providing value means offering industry-leading turnaround times. Providing value means giving you the ability to talk to a real person who understands your style and your needs. Providing value means offering the most comprehensive range of products including framed domestic-style and

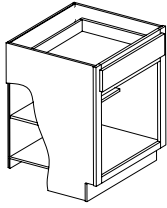
frameless European-style cabinets, standard post-form and self-edge custom countertops - without ever sacrificing on quality. Providing value means delivering a product that our customers can be proud of, at a price that they want.

**The bottom line is,  
an inviting kitchen is what  
makes a house a home.**

**Let CNC inspire your next  
design with the design,  
durability, and, most of all,  
value to suit your taste.**

## Luxor

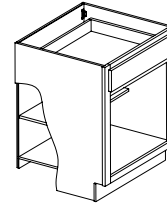
---



The Luxor Collection is our partial overlay cabinet constructed from all plywood. All drawer boxes are made with dovetail construction and is available with a slab or five-piece drawer front and soft-close undermount glides.

## Country

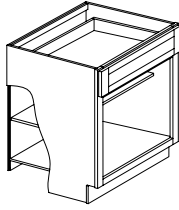
---



The Country Collection is our standard overlay cabinet constructed from all plywood. The wall and base cabinets are equipped with 3/4" plywood adjustable shelves and adjustable hinges. The drawer boxes are made with plywood and have side mount glides.

## Concord

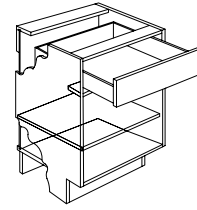
---



The Concord Collection is our full-overlay all plywood cabinet, which comes with full 1/2" back panels, complete with solid wood dovetail drawer box and a 5-piece drawer front, enhanced by a soft-close feature and full extension under-mount glides to create a smooth glide. The cabinetry is equipped with 3/4" adjustable shelves with metal clips and adjustable soft close hinges. Natural wood finished interiors allow for practicality and ease of maintenance.

## Classic

---



The Classic series is composed of a frame-less box construction, with double white wall metal drawer with 1/2" plywood bottom. that are outfitted with full extension, under-mount drawer glides, as well as the soft-close feature. The adjustable soft close hinges, 3/4" adjustable full-depth plywood shelves, and dowel and glue-clamped assembly construction create a solid, durable framework for your cabinetry.

# Luxor Collection

2-3 Day Lead Time



# Country Collection

2-3 Day Lead Time



Available Finishes:



Available Finishes:



## Partial Overlay

1/2" Reveal, Full Access

### 1 Door Style

Slab & five-piece drawer fronts available



All plywood cabinet box construction



Dovetail drawers



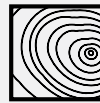
Soft close doors and drawers

## Standard Overlay

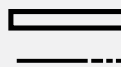
1" Reveal

### 1 Door Style

Raised MDF center panel



All plywood cabinet box construction



3/4" adjustable shelves

# Concord Collection

7 Day Lead Time



Available Finishes:



# Classic Collection

7 Day Lead Time



Available Finishes:



## Full Overlay

1/4" Reveal

## 4 Door Styles



All plywood cabinet box construction



Full Extension Dovetail drawers



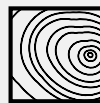
Soft close doors and drawers

## Frameless

1/8" Reveal

## 4 Door Styles

Gloss, matte and textured finishes



Laminated plywood frameless box



Double wall metal drawer boxes



Soft close doors and drawers

# Luxor







# Luxor

---

Luxor Collection

**Overlay:** 1/2" Reveal

**Panels:** Shaker

Perfect for either traditional or contemporary décor, Luxor cabinets feature a shaker style and partial overlay, providing the charm and elegance you desire. Available in five versatile finishes including two paints and three stained finishes.



**Smoky Grey** L02



**Misty Grey** L03



**Harvest** L05



**White** L10



**Espresso** L11



**5 Piece drawer front available**

Luxor / Harvest

**dart**<sup>TM</sup>  
by CNC Cabinetry

**2-3 Day Delivery**

DART<sup>TM</sup> by CNC Cabinetry<sup>®</sup> provides a competitive edge with its high-quality cabinets, popular features, and exceptional value, all delivered at unrivaled speed. Meet your customers' deadlines with beautiful, premium cabinetry that outpaces other brands in delivery time.



Luxor / Misty Grey



# Country











# Country Oak

---

Country Collection

**Overlay:** Standard Reveal

**Panels:** Raised Panel

This solid oak cabinet combines traditional style with lasting quality. A practical, light wood finish coats the interior of the cabinets, while the exterior is tinted with a warm honey color. Country Oak's durability ensures these cabinets will be a lasting, charming fixture in your home for years to come.



**Honey C4**

# Concord







# Elegant

---

Concord Collection

**Overlay:** Full Overlay

**Panels:** Shaker

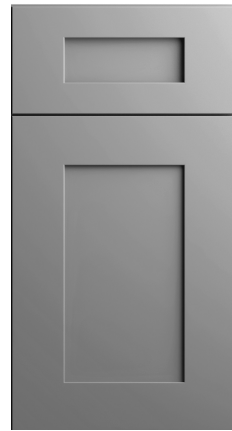
Perfect for either traditional or contemporary décor, Elegant cabinets feature a wide shaker style and full overlay. In addition, the wide rails add a blend of strength and character, seasoned with a noticeable charm and elegance.



**Smoky Grey** EB02



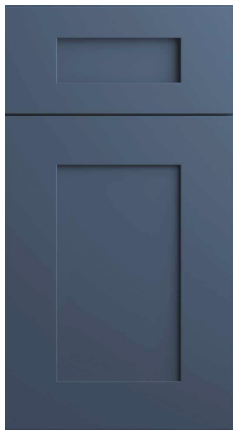
**White** EB10



**Dove** EB22



**Stone** EB23



**Ocean** EB27



Elegant / Smoky Grey



# Richmond

---

Concord Collection

**Overlay:** Full Overlay

**Panels:** Shaker

Richmond is a mitered flat panel door, with a beautiful accent moulding, it is available in a warm light grey stain and a white painted finish.

A perfect fit for any transitional style kitchen.



**White** RB10



**Stone** RB23



Richmond / White





Richmond / Stone



# Park Ave

---

Concord Collection

**Overlay:** Full Overlay

**Panels:** Raised Panels

Park Avenue—the name itself signifies sophistication and elegance. Both the door and drawer front in this style is 5-piece miter constructed, with a full overlay. Furniture inspired, the Park Avenue door has the appearance of interior moldings. Together, they will attract anyone looking for a richly crafted door, at an affordable price.



**White** PB10



**Ocean** PB27



Park Ave / White





# Fashion

---

Concord Collection

**Overlay:** Full Overlay

**Panels:** Shaker

This full overlay, Shaker-inspired door comes with a beautiful accent molding wrapped around the flat center panel for durability. Available in two painted finish options; White and Ocean.



**White** FB10



**Ocean** FB27

# Classic







# Matrix

---

Classic Collection

**Overlay:** Full Overlay

**Panels:** Slab

Today's contemporary design trends focus heavily on the depth & colors of real wood. Matrix gives you that richness, but with a longer lifespan. The finish is a textured laminate panel available in two stocked colors, Silver and Greystone. Let Matrix bring your modern designs to life.



**Silver** M18



**Greystone** M19

Matrix / Greystone





Matrix / Silver



# Milano

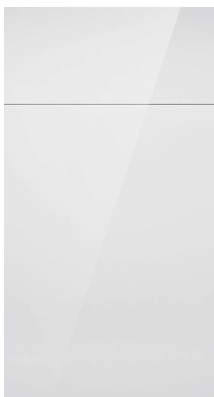
---

Classic Collection

**Overlay:** Full Overlay

**Panels:** Slab

This full overlay, contemporary style slab door is made from a MDF core, wrapped in PET with a matching edgeband. PET (Polyethylene Terephthalate) materials are extremely durable, resistant to heat and moisture, and highly resistant to warping. Available in high gloss and matte finishes, it is easy to clean and versatile to fit any room in the house.



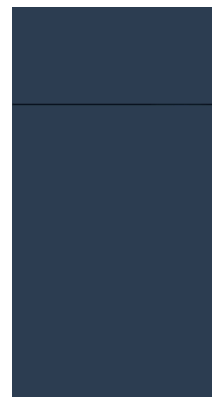
**Polar White** M40  
Gloss



**Fossil Grey** M41  
Gloss



**Sand** M42  
Matte



**Seaside** M43  
Matte

Milano / Seaside (Wall Cabinet), Sand (Base Cabinets)

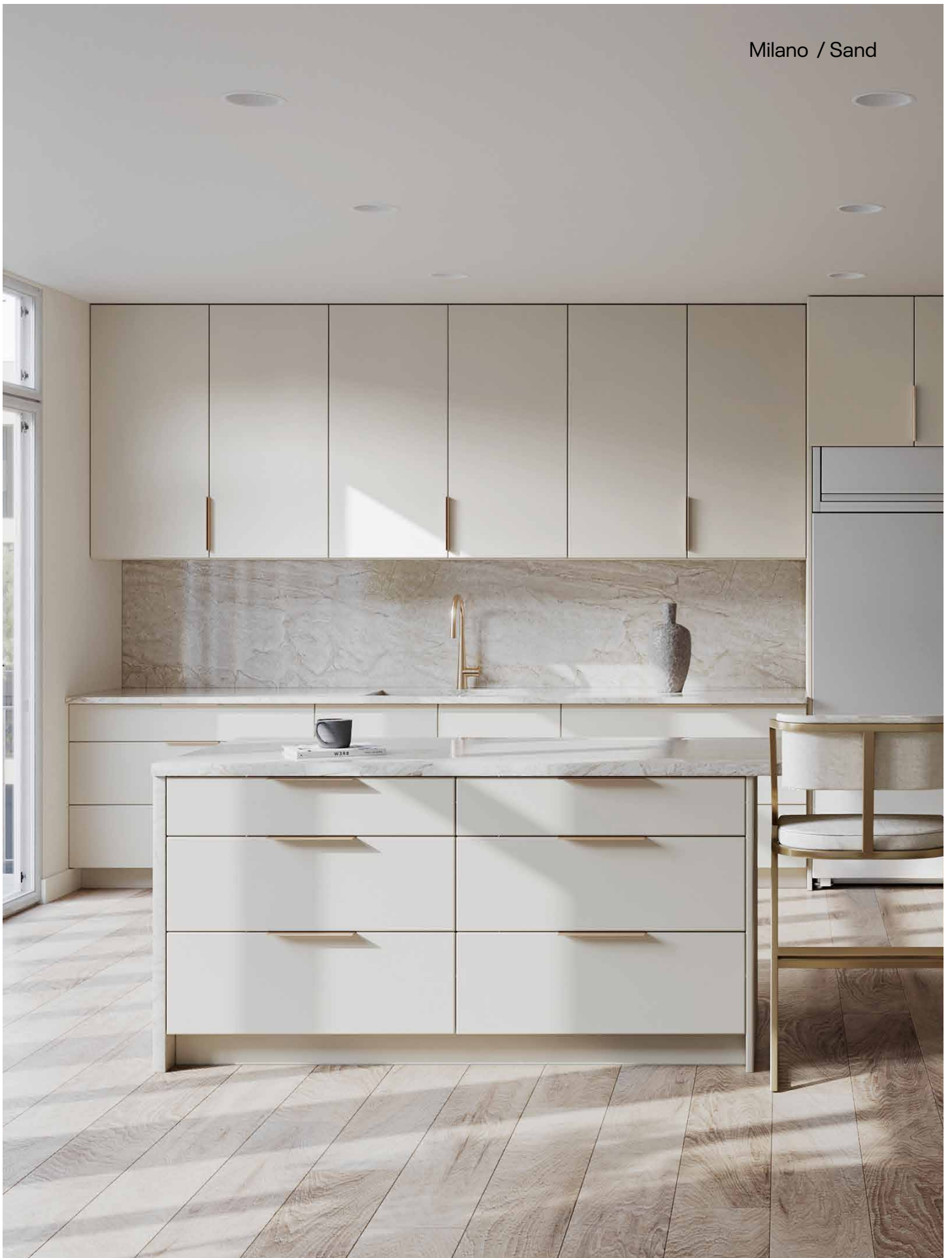


Milano / Fossil Grey





Milano / Sand





Milano Polar White / Fossil Grey



Versailles / White



# Versailles

---

Classic Collection

**Overlay:** Frameless

**Panels:** Shaker

Versailles is a new modern perspective on the shaker door, a true transitional design that combines the integrity of the past with the styles of today. The 3/4" wide door frame is made of birch and a veneered center panel. The Versailles is paired with our frameless Classic cabinet boxes, with accessories made specifically to accent this sleek door style. It's thin clean lines will add a sophisticated look to the kitchen of your dreams.



**White** V10



Versailles / White



# Vanguard

---

Furniture Vanity Collection

**Overlay:** Inset

**Panels:** Shaker

Quality, function, and transitional style; this is the winning combination for a successful furniture design. All these qualities encompass the creation of the elegant Vanguard Bathroom Vanity. Equipped with a soft-close mechanism on all doors and drawers, ample storage and a design that updates any style from farmhouse to industrial.



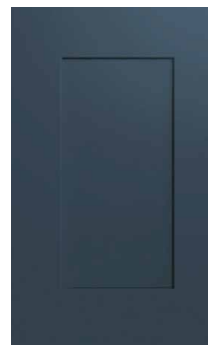
**White** VG10



**Espresso** V11



**Dove** VG22



**Indigo** VG26



Vanguard / Indigo



Surelle / Bianca



# Surelle

---

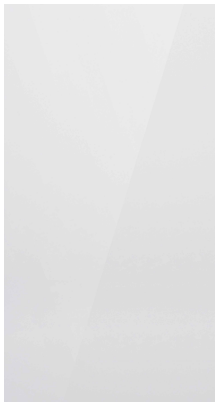
Floating Vanity Collection

**Overlay:** Frameless

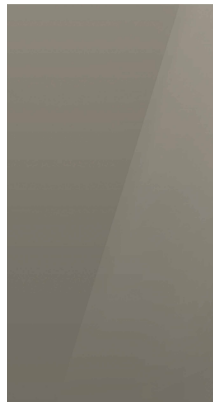
**Panels:** Slab

Modern and sophisticated is the perfect way to describe the all-new Surelle vanity collection by CNC Cabinetry®. This beautiful, wall-hung vanity is available in four trendy finishes to fit any bathroom decor.

Available with a top or single vanity, each vanity includes a modern square engineered stone vanity top, that will enhance the bathroom of your dreams.



**Bianca** SL30  
Gloss



**Grigio** SL31  
Gloss



**Cemento** SL32  
Textured



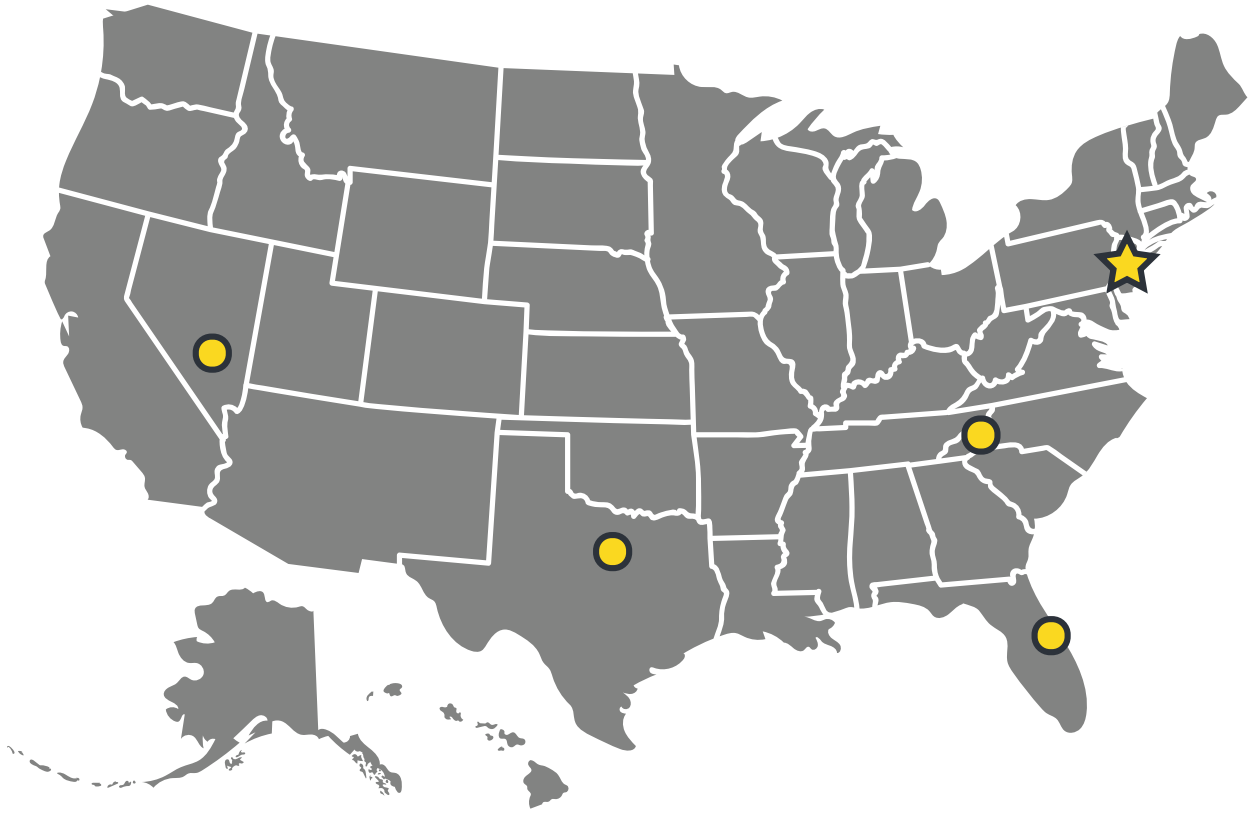
**Noce** SL33  
Textured





## Decorative Accessories

Try organizing your kitchen with unique cabinet storage and wine racking, or utilize glass doors with wine and plate racks to add diversity and definition. With options to bring out your personal style, and offering the fastest turnaround possible at competitive pricing, CNC Cabinetry has a diverse assortment of accessories to make a unique kitchen.



## Our growing family.



### Headquarters

101 Kentile Road  
South Plainfield, NJ 07080



### Mid Atlantic

2000 Nazareth Church Rd  
Spartanburg, SC 29301



### West Coast

3475 North Las Vegas Blvd  
Las Vegas, NV 89115



### South East

4501 Homerun Blvd. # 300  
Davenport, FL 33837



### South West

2300 East Bardin Road  
Arlington, TX 76018

## Limited Lifetime Warranty

---

CNC Cabinetry Inc. ("CNC") provides the following limited lifetime warranty to the original Residential Purchaser of all cabinetry and vanities manufactured by CNC. This Limited Lifetime Warranty ("Warranty") is only applicable to cabinets and vanities sold to the original Residential purchaser (as defined below) and used in the applications described below within the United States.

Except as allowed by applicable law, you may not assign or transfer this Warranty.

Under this Warranty, an original Residential purchaser is defined as an individual who purchases and installs the cabinets and vanities in a dwelling that is owned and used by that person as a primary or secondary home. A primary or secondary home does not include rental property. This Warranty does not apply to landlords, leasing companies or other commercial purchasers. Original residential purchaser shall include any business or person such as a builder, contractor or developer that purchases and install CNC cabinets and vanities in a newly constructed or renovated dwelling that will be used by the initial owner/purchaser of that dwelling as a primary or secondary home.

Subject to the limitations and exclusions set forth, CNC warrants to the original Residential purchaser that the cabinets and vanities will be free from defects in material and workmanship, Damage that occurs during normal wear and tear, or damage due to exposure to moisture or extreme temperatures are not covered under the warranty.

The Warranty period for the cabinets and vanities begin on the date the cabinet and vanity were purchased, whether purchased by you or by a third party on your behalf. Your warranty is only valid if you used the dwelling as your primary or secondary home and does not extend to future owners if the property is sold.

This Warranty does not apply to cabinets or vanities: 1. Installed outdoors; 2. misused, abused, or unauthorized alterations; 3. Improperly stored or placed in humid environment or subjected to improper temperatures; 4. Damaged due to flood, fire or other natural disasters; 5. Exhibiting normal wear and tear; 6. Which have been improperly installed, maintained or cleaned. In the event of a defect in the workmanship or materials occurring during the warranty period, CNC will at its option, repair or replace any defective cabinet or vanity or component provided, if it is commercially feasible. If it is not commercially feasible, CNC reserves the right to provide a credit towards a similar type of product sold by CNC. This is your sole and exclusive remedy for any defects.

This Warranty is limited to the replacement of defective parts only and does not include service, labor or transportation charges related to the removal or installation of the defective or replacement parts. This Warranty does not apply to any products used in conjunction with the cabinetry, or vanity, such as countertops, appliances, plumbing fixtures, decorative hardware, lighting. Repair or replacement remedies offered under this Warranty are subject to the current product offerings of styles and construction of CNC at that time. If a warranty claim is filed after a product has been discontinued or obsolete, CNC reserves the right at its sole option, to replace that part with one of the same or similar style based on availability and cannot guarantee an exact match.

The remedies described above are the sole and exclusive remedies and CNC's entire liability for any breach of this Warranty. Total liability shall under no circumstances exceed the actual amount paid for the defective cabinet or vanity. CNC shall not be responsible for any consequential, incidental, special or punitive damages. This Warranty gives you specific legal rights and you may also have other rights which vary from state to state.

For replacements under CNC's limited lifetime warranty, contact your authorized CNC dealer who will arrange for inspection of the cabinet. A dated sales receipt as proof of purchase is required to obtain benefits from this warranty, if you have difficulty reaching your dealer, you may reach out to CNC Cabinetry directly.

Member



[www.cnccabinetry.com](http://www.cnccabinetry.com)

**Headquarters**

101 Kentile Road  
South Plainfield, NJ 07080

**South East**

4501 Homerun Blvd. # 300  
Davenport, FL 33837

**Mid Atlantic**

2000 Nazareth Church Rd  
Spartanburg, SC 29301

**West Coast**

3475 North Las Vegas Blvd  
Las Vegas, NV 89115

**South West**

2300 East Bardin Road  
Arlington, TX 76018

